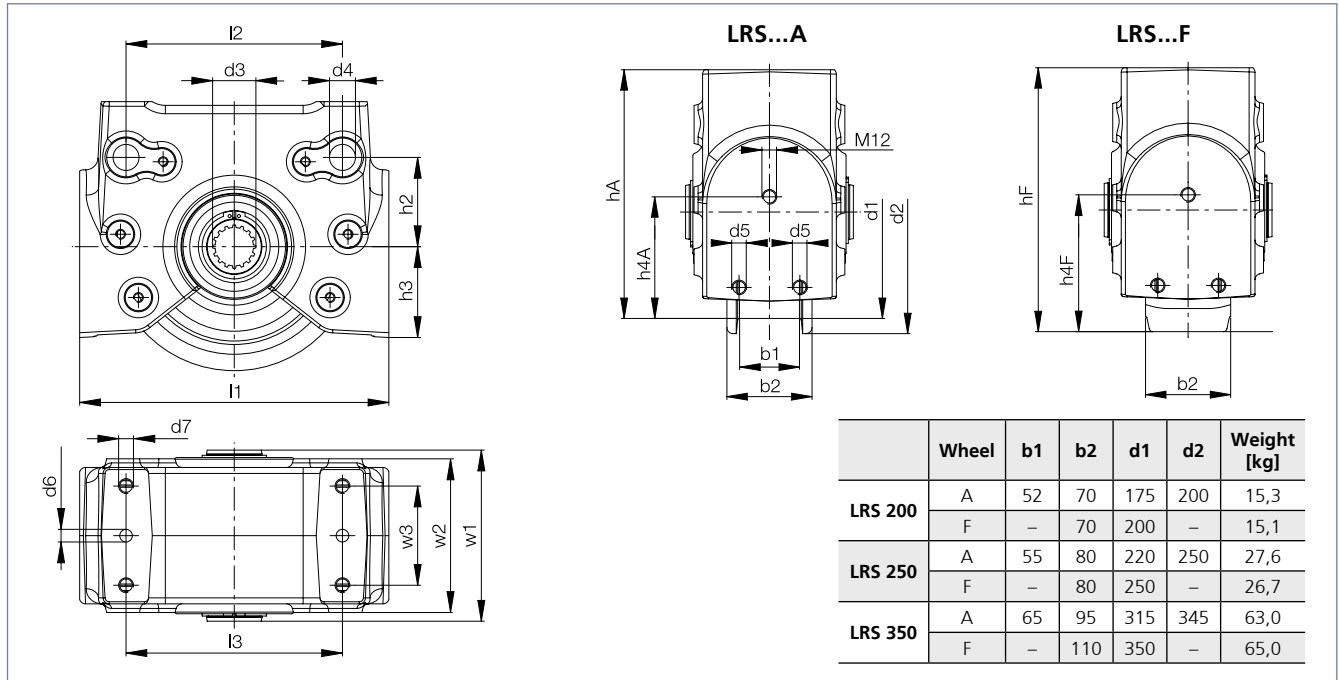


# Dimensions

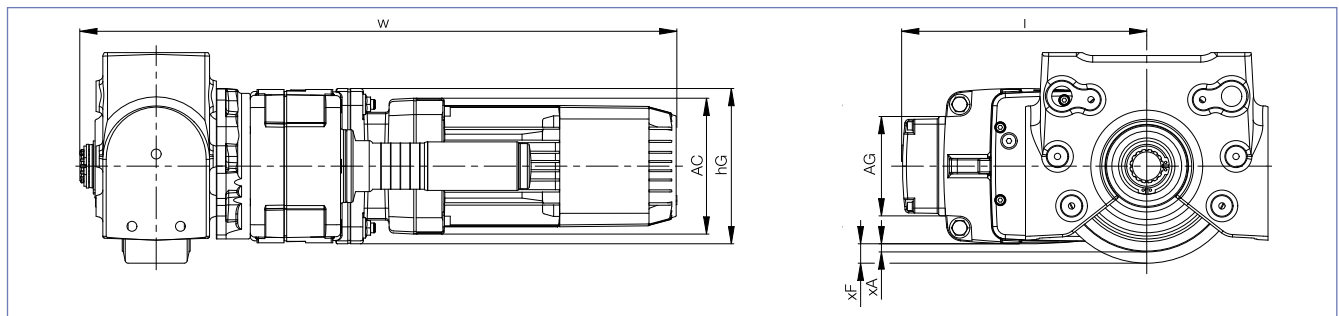
## LRS 200 / LRS 250 / LRS 350



	d3 <sub>6g/7H</sub>	d4 <sub>F8</sub>	d5	d6 <sub>H13</sub>	d7 <sup>1)</sup>	h <sub>A</sub>	h <sub>F</sub>	h4 <sub>A</sub>	h4 <sub>F</sub>	h2	h3	l1	l2	l3	w1	w2	w3
LRS 200	N35 x 2 x 16	21	M12	10,2	M12 x 45	204,5	217	100	112,5	72	77	250	175	175	138	126	80
LRS 250	N45 x 2 x 21	30	M16	14	M16 x 55	255	270	100	115	90	97	306	220	220	156	138	85
LRS 350	N50 x 2 x 24	40	M16	14	M20 x 80	349,5	367	140	157,5	80	141	450	370	320	200	186	100

1) Length of the top connection bolt

## Driven LRS 200 / LRS 250 / LRS 350 with offset gearbox and ZBF travel motor



	Size		Drive combination		l	h <sub>G</sub>	w	AC	AG	Ground clearance	
	Gearbox	Motor	A	F						x <sub>A</sub>	x <sub>F</sub>
LRS 200	AMK 20	ZBF 63/71	11	22	228	131	608	140	103	17.5	30
		ZBF 80	13	-	238	131	664	157	103	9	21.5
	AMK 30	ZBF 63/71	12	21	253	160	615	140	103	7.5	20
		ZBF 90B/100	14, 15	23, 25	281	160	715	196	133	-10.5	2
LRS 250	AMK 30	ZBF 63	31	41	253	160	641	140	103	30	45
		ZBF 80/90A	-	43	263	160	697	157	103	30	45
		ZBF 90B/100	33, 35	45	281	160	741	196	133	12	27
	AMK 40	ZBF 71	32	42	272	190	650	140	103	15	30
ZBF 90B/100		34	44	300	190	750	196	133	12	27	
LRS 350	ADK 50	ZBF 80	52	62	312	250	769	157	103	32.5	50
		ZBF 90B/100	54	64	330	250	813	196	133	32.5	50
		ZBF 132	55	65	363	260	955	260	173	27.5	45